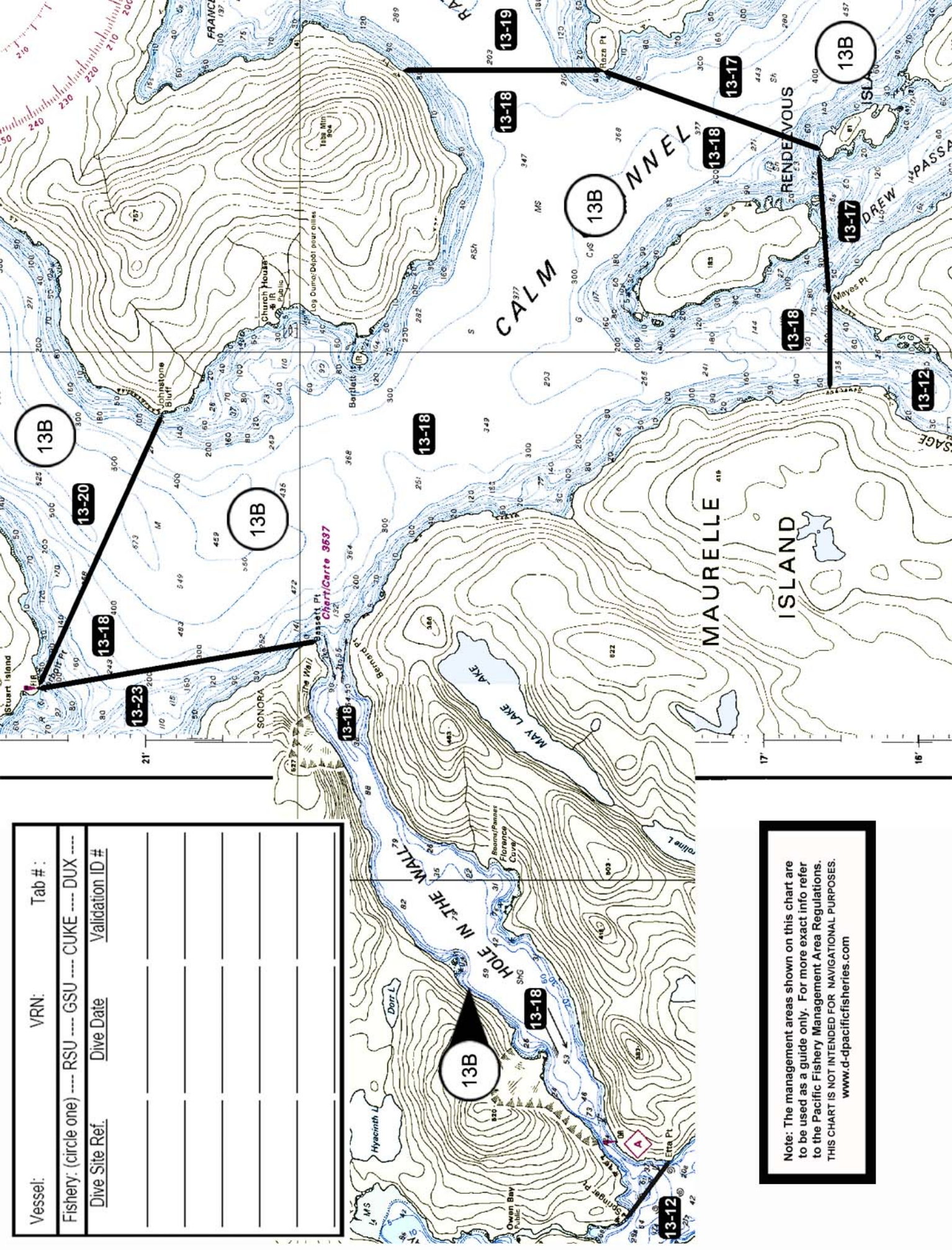


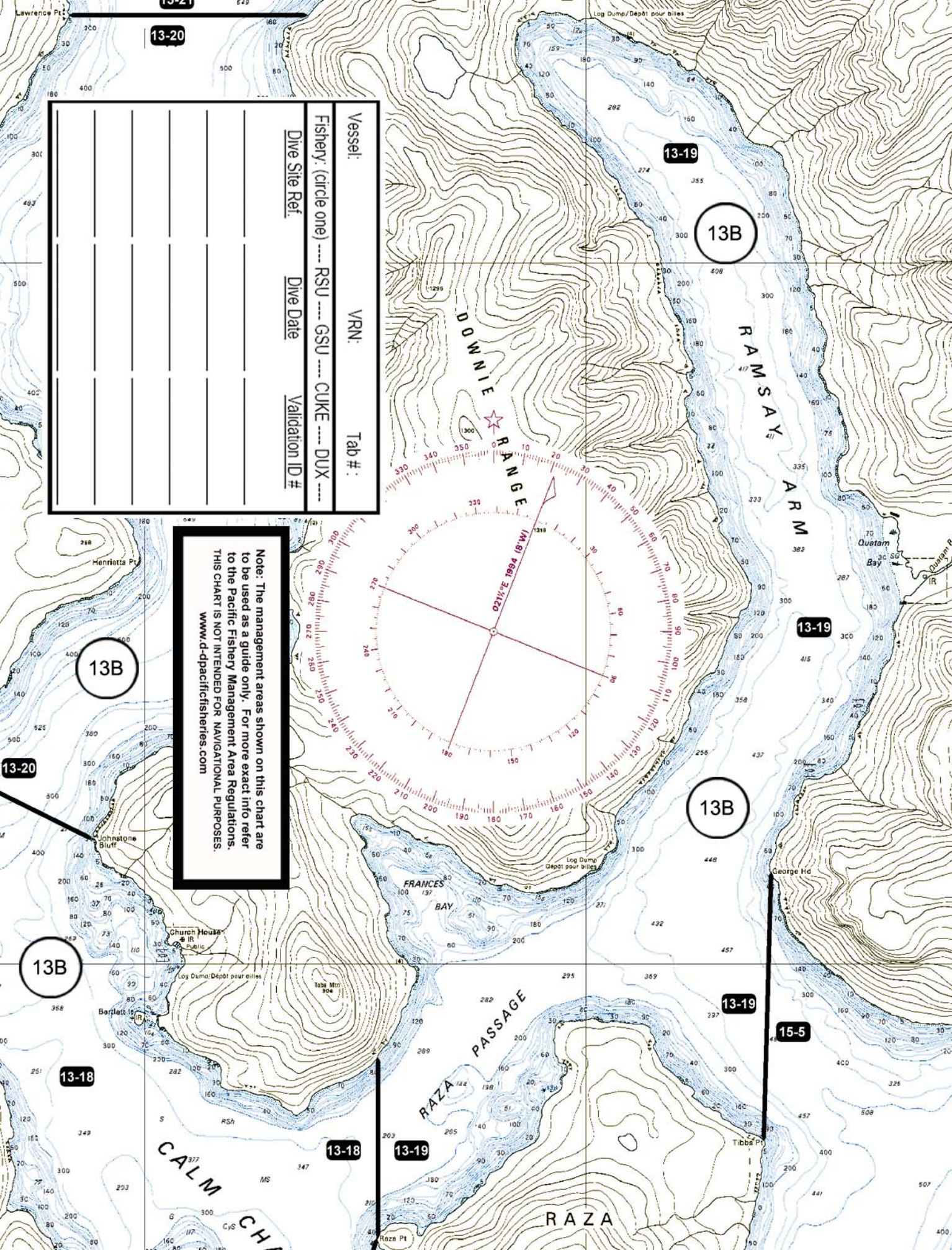
**Figure 16.** QMA 13B North Area 13: Subareas 13-17 to 13-20, 13-23. QMA 13C East Thurlow Island: 13-7 to 13-9, 13-24 to 13-28. Okisollo CNTR: Subarea 13-10. For description of closures please see Appendix 1, Section 5.



Vessel:	VRN:	Tab #:
Fishery: (circle one) ---- RSU ---- GSU ---- CUKE ---- DUX ----		
Dive Site Ref.	Dive Date	Validation ID #

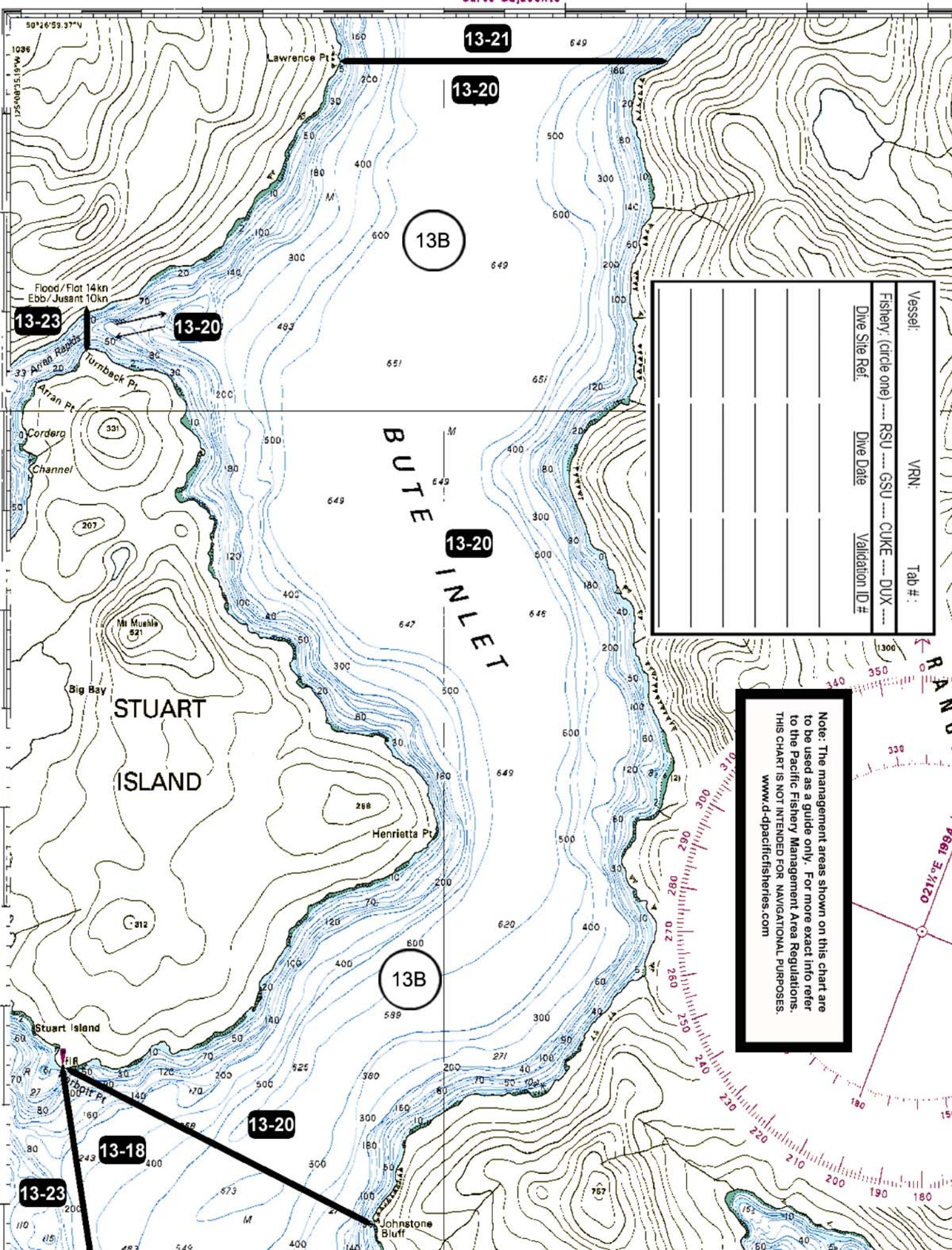


Note: The management areas shown on this chart are to be used as a guide only. For more exact info refer to the Pacific Fishery Management Area Regulations. THIS CHART IS NOT INTENDED FOR NAVIGATIONAL PURPOSES.  
[www.d-pacificfisheries.com](http://www.d-pacificfisheries.com)



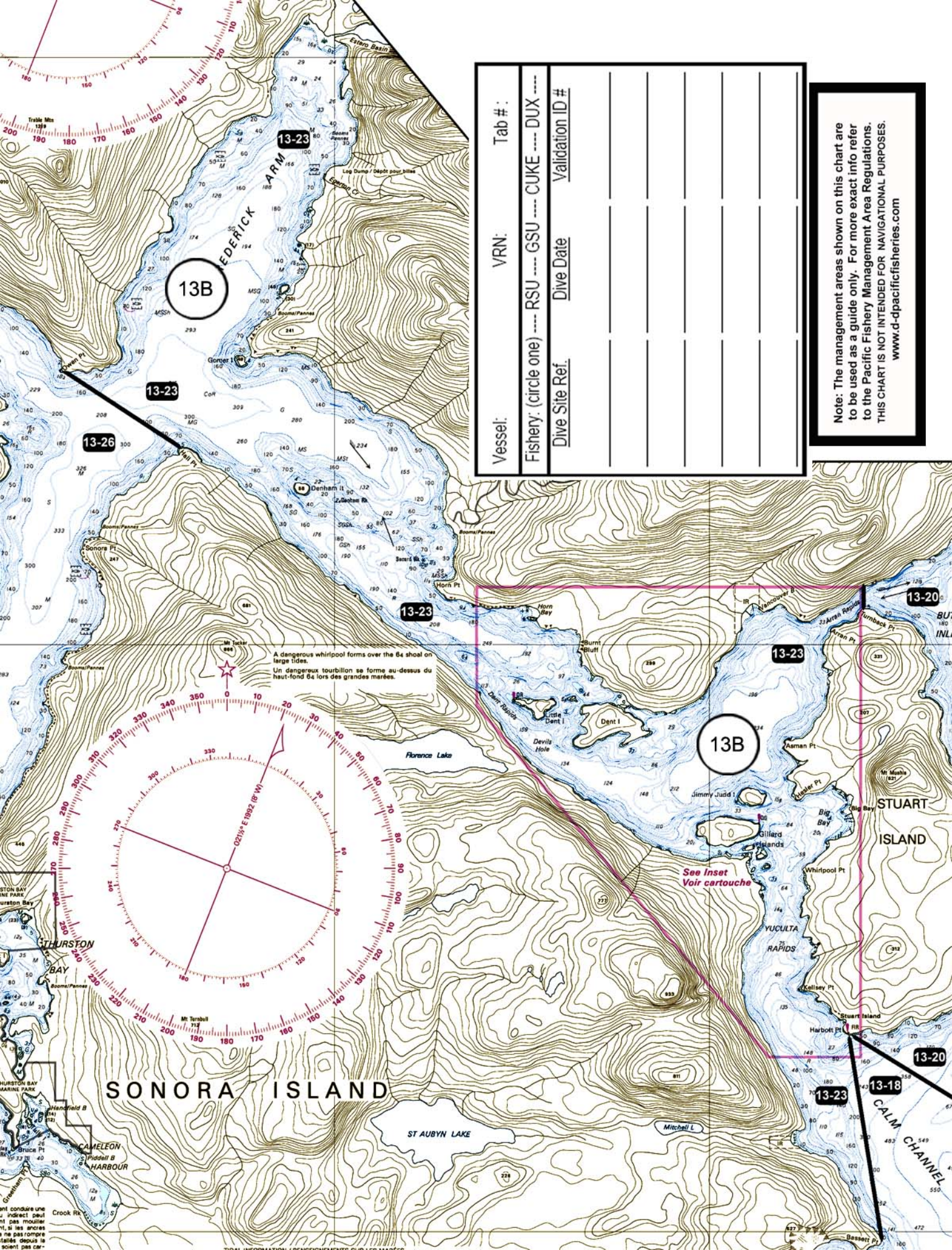
Vessel:	VRN:	Tab #:
Fishery: (circle one) --- RSU --- GSU --- CUKE --- DUX ---		
Dive Site Ref:	Dive Date	Validation ID #

Note: The management areas shown on this chart are to be used as a guide only. For more exact info refer to the Pacific Fishery Management Area Regulations. THIS CHART IS NOT INTENDED FOR NAVIGATIONAL PURPOSES. [www.d-pacificfisheries.com](http://www.d-pacificfisheries.com)



Vessel:	VRN:	Tab #:
Fishery: (circle one) --- RSU --- GSU --- CUKE --- DUX ---		
Dive Site Ref:	Dive Date	Validation ID #

Note: The management areas shown on this chart are to be used as a guide only. For more exact info refer to the Pacific Fishery Management Area Regulations. THIS CHART IS NOT INTENDED FOR NAVIGATIONAL PURPOSES. [www.d-pacificfisheries.com](http://www.d-pacificfisheries.com)



13B

13-23

13-26

13-23

13-23

13B

13-20

13-20

13-18

13-23

Vessel:	VRN:	Tab #:
Fishery: (circle one) ---- RSU ---- GSU ---- CUKE ---- DUX ----	Dive Date	Validation ID #
Dive Site Ref.		

Note: The management areas shown on this chart are to be used as a guide only. For more exact info refer to the Pacific Fishery Management Area Regulations. THIS CHART IS NOT INTENDED FOR NAVIGATIONAL PURPOSES. [www.d-tpacificfisheries.com](http://www.d-tpacificfisheries.com)

A dangerous whirlpool forms over the 64 shoal on large tides.  
Un dangereux tourbillon se forme au-dessus du haut-fond 64 lors des grandes marées.

See Inset  
Voir cartouche

SONORA ISLAND

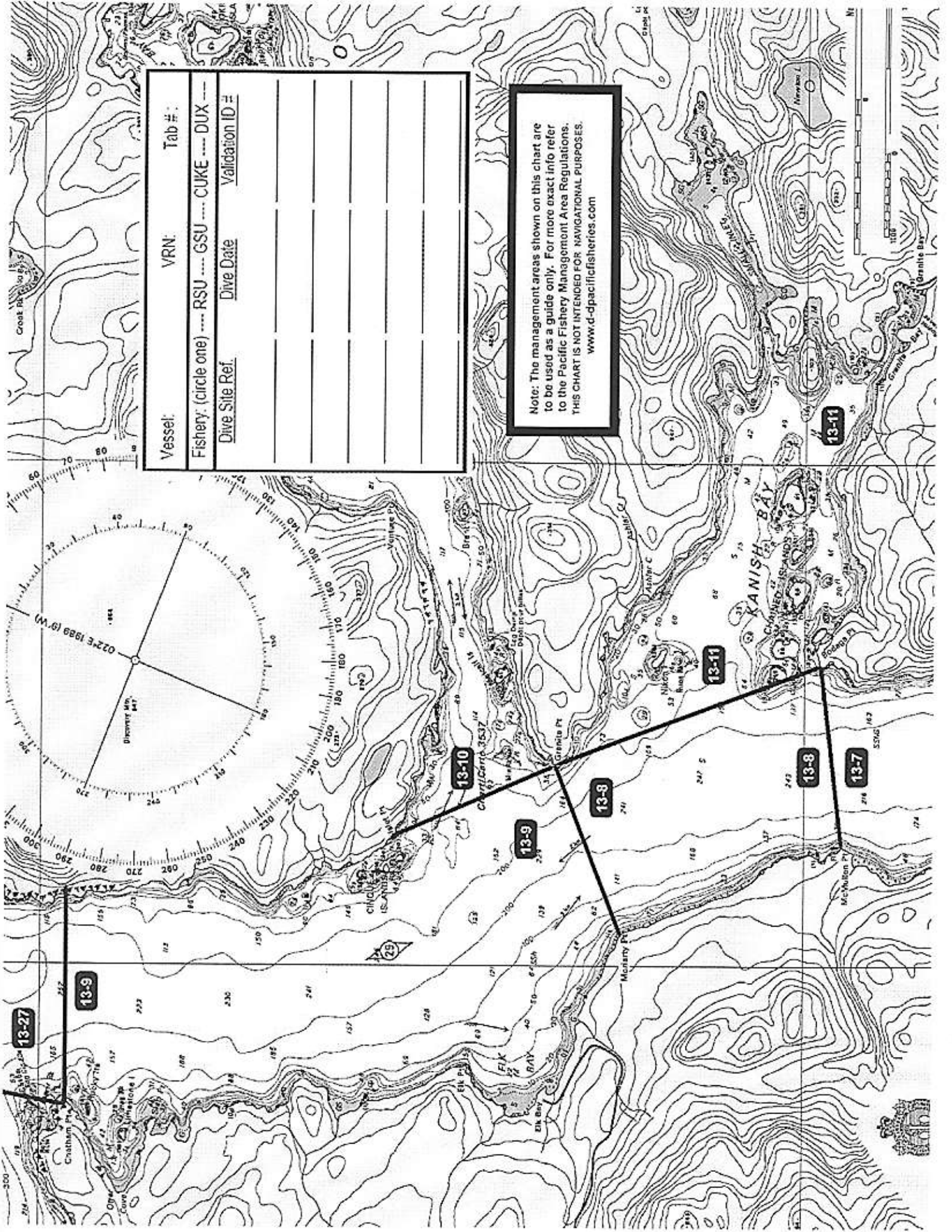
STUART ISLAND

ST AUBYN LAKE

CALM CHANNEL

Ent conduire une  
indirect peut  
pas mouler  
si les ancras  
ne pas rompre  
tallies depuis la  
soient pas ca-





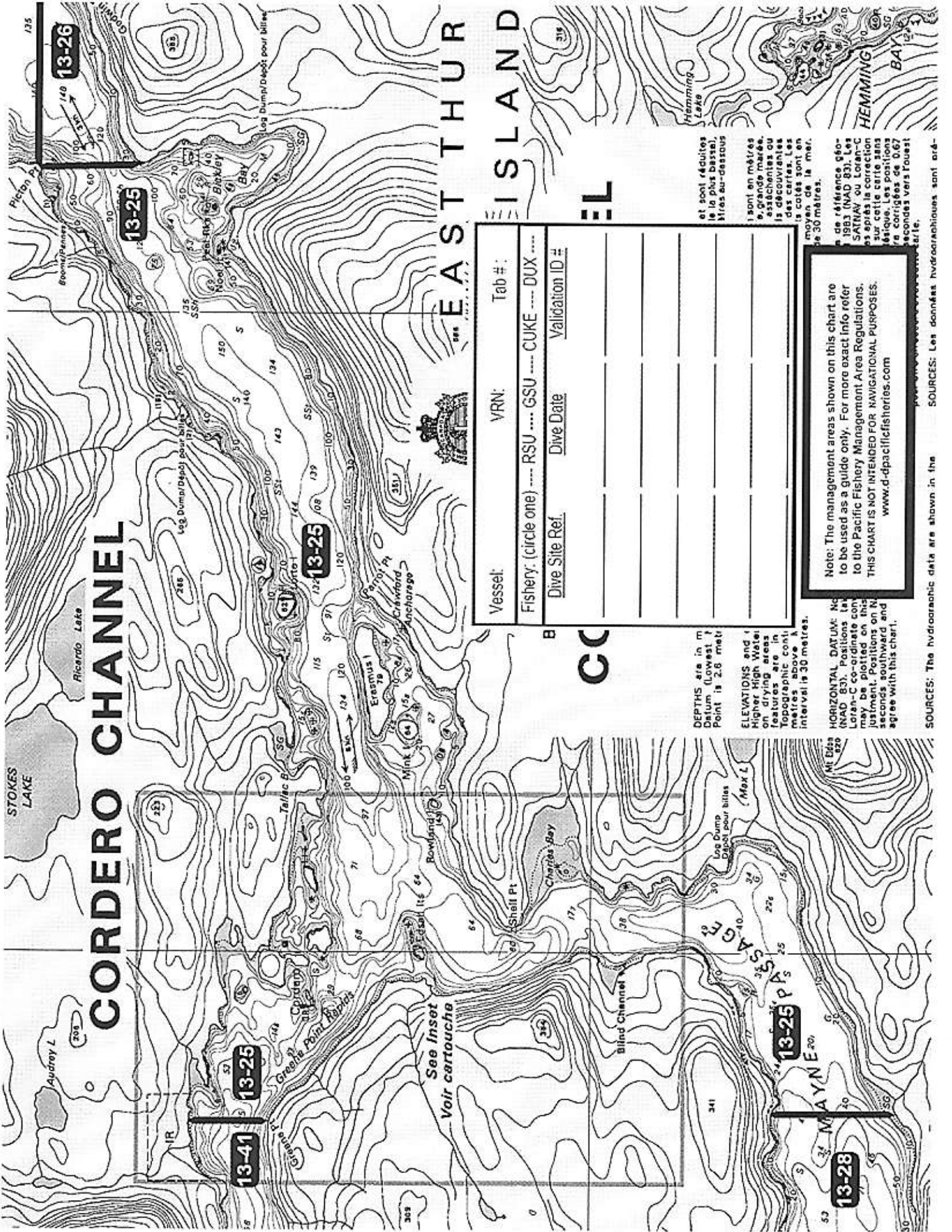
Vessel:	VRN:	Tab #:
Fishery: (circle one) --- RSU --- GSU --- CUKE --- DUX ---		
Dive Site Ref.	Dive Date	Validation ID #

Note: The management areas shown on this chart are to be used as a guide only. For more exact info refer to the Pacific Fishery Management Area Regulations. THIS CHART IS NOT INTENDED FOR NAVIGATIONAL PURPOSES. [www.d-pacificfisheries.com](http://www.d-pacificfisheries.com)





# CORDERO CHANNEL



EAST THUR ISLAND

Vessel:	VRN:	Tab #:
Fishery: (circle one) --- RSU --- GSU --- CUKE --- DUX ---		
Dive Site Ref.	Dive Date	Validation ID #

Note: The management areas shown on this chart are to be used as a guide only. For more exact info refer to the Pacific Fishery Management Area Regulations. THIS CHART IS NOT INTENDED FOR NAVIGATIONAL PURPOSES. [www.d-tpacificfisheries.com](http://www.d-tpacificfisheries.com)

DEPTHS are in m Datum (lowest point) is 2.6 meter  
 ELEVATIONS and higher High Water on drying areas features are in topographic contour interval is 30 metres.  
 HORIZONTAL DATUM: NAD 83. Positions (Loran-C co-ordinate control) are in seconds southward and agree with this chart.

et sont réduites le la plus basses). Mires au-dessous sont en mètres. Grande marée, asséchées ou découvertes des cartes. Les isotes sont en moyenne de la mer, de 30 mètres.  
 de référence G60-1983 (NAD 83). Les positions (Loran-C) après la correction sur cette carte sans erreur. Les positions sont corrigées de 0.67 secondes vers l'ouest de la carte.

SOURCES: The hydrographic data are shown in the chart. SOURCES: Les données hydrographiques sont en la carte.



